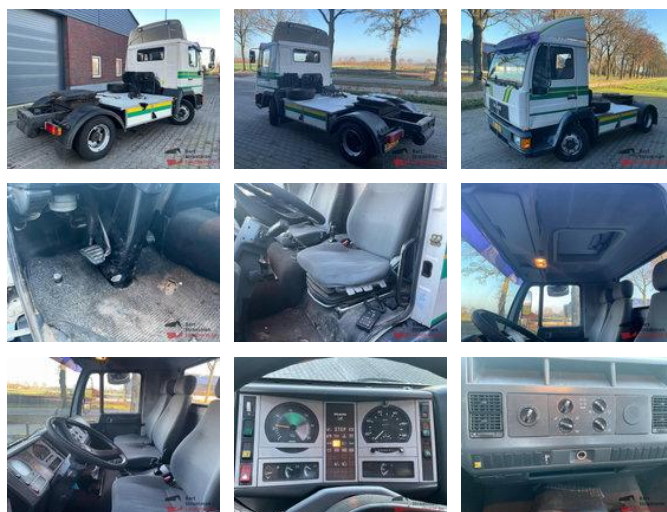


## MAN 8 FLS 22 8t opleggertrekker met luchtvering, handgeschakeld.

### General characteristics

Brand	MAN
Model	8
Subcategory	Cab over engine
License plate	BF-ZZ-25
Meter reading	289.431km
Year of construction	1998
Date of first registration	28-01-1998
Condition	Used
General state	Good
Fuel	Diesel
Emission class	Euro 2
Reference	BS1858



# Properties

Single weight	3.840kg
Load capacity	4.560kg
GVW	8.400kg
Width	225cm
Cabin	Nee
Serial number	WMAL341030G123191

# MAN 8 FLS 22 8t opleggertrekker met luchtvering, handgeschakeld.

## Technical specifications

Number of axes	2
Axis configuration	4x2
Transmission	Manual transmission
Assets	220hp

## Description

= Additional options and accessories = - Engine Brake - Spoiler set

## Accessories

- Disc brakes
- Leaf spring suspension
- Air suspension
- Radio/CD player
- Spare wheel