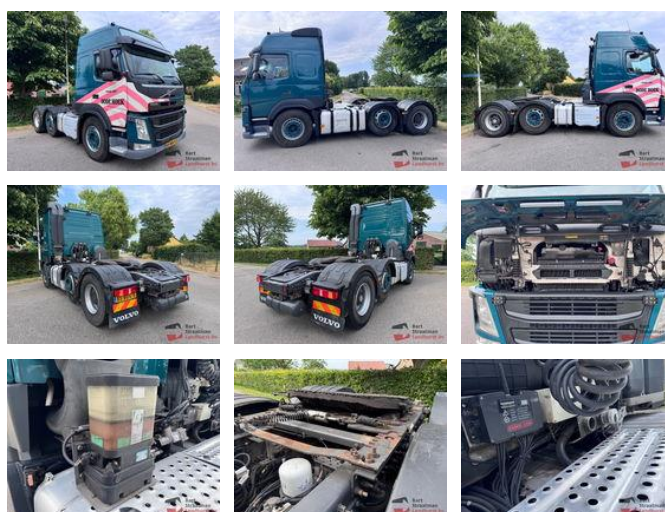


Volvo FM 420 6x2 Euro 6 Tractor with hydraulic sliding hub reduction and radio control

General features

Brand	Volvo
Model	FM 420
Subcategory	Cab over engine
Licence plate	85-BDG-5
Odometer reading	570.691km
Construction year	2013
Date of first registration	19-12-2013
Condition	Used
General condition	Good
Fuel	Diesel
Emission class	Euro 6
Reference	OT5300



Characteristics

Empty weight	8.678kg
Load capacity	15.230kg
GVW	27.000kg
Length	651cm
Width	250cm
Cabin	Sleeper cabin
Cylinder contents	12.777cc

Volvo FM 420 6x2 Euro 6 Tractor with hydraulic sliding hub reduction and radio control

Technical specifications

Number of axes	3
Axis configuration	6x2
Transmission	Automatic
Engine output	428hp

Description

= Additional options and accessories = - Electric mirrors - Hub Reduction - Hydraulics - Lift Axle - Sleeping cabin - Sper - Transmitting equipment - Work lamp(s) = More information = Year of construction: 2013

Accessories

- Central lubrication system
- Electric windows
- Air suspension system
- Disc brakes
- Anti-lock braking system
- Leaf spring suspension
- Central lubrication
- Electrically operated windows
- Air suspension
- Fog lights
- Navigation system
- Radio/CD player
- Sleeper cab
- Speed limiter
-